



## Program Brochure

Connecting Global Talent with Korean Companies

# Your Gateway to a Korean Career

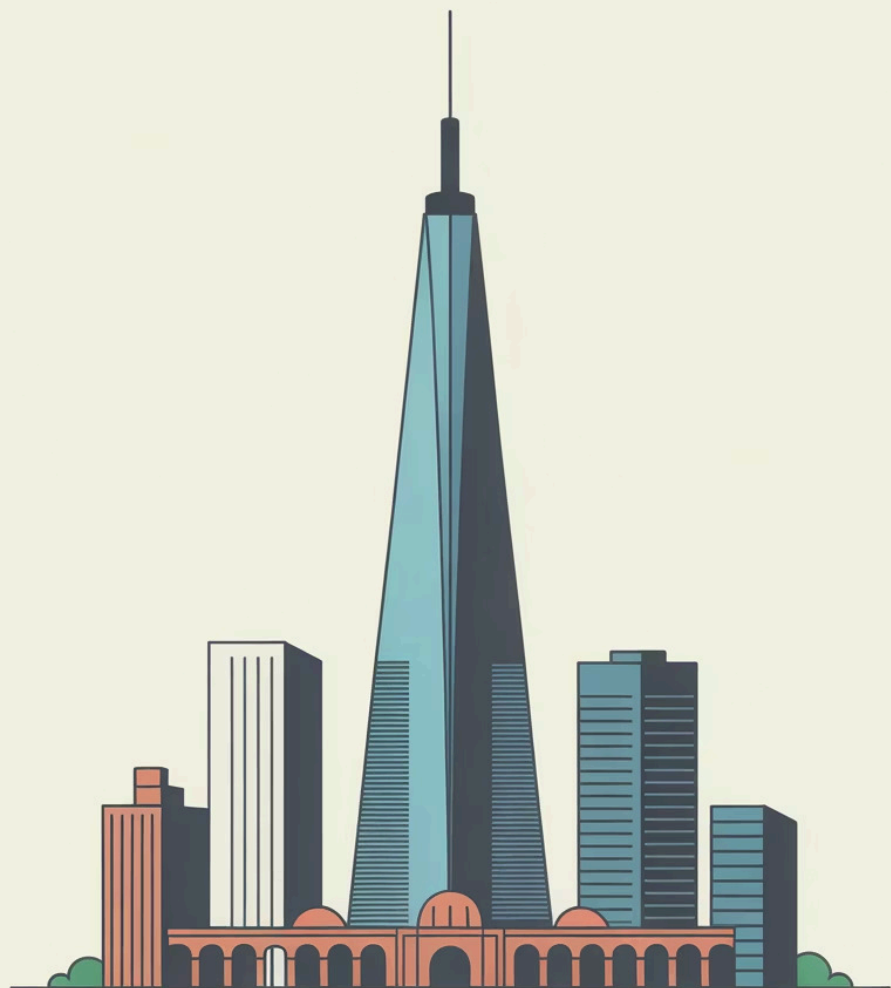
The **Career Bridge Program** is an *education-based experiential training program*, not a labor-focused internship.

It's designed to help international talents understand Korean corporate culture, develop practical skills, and build confidence for their future careers.

This is more than just a cultural exchange — it's a structured learning opportunity that connects academic knowledge with real-world experience in one of Asia's most dynamic business environments.

The program is open to *everyone* — whether you're currently abroad, studying in Korea, holding a job-seeking visa (D-10), or a non-student eager to gain professional exposure.





# SEOUL

## Program Overview

### Who Can Join

The program is open to *everyone* — whether you're currently abroad, studying in Korea, holding a job-seeking visa (D-10), or even a graduate.

We welcome all motivated international talents who are eager to experience and embrace Korean corporate culture.

### Our Mission

We provide international talent with hands-on workplace experience in Korea while strengthening Korean companies' global communication capabilities and overseas expansion readiness. It's a win-win partnership.

# Three Flexible Program Tracks

## Short-term Cultural Experience

Perfect for exchange students and short-term visitors seeking cultural and workplace exposure during vacation periods.

- Up to 8 weeks duration
- Cultural immersion focus
- Full-time, on-site work

## Short-term Career Track

Designed for degree-seeking students (D-2 visa) who want to build a career pipeline with potential placement after graduation.

- Up to 8 weeks duration
- Career-focused projects
- Post-graduation opportunities

## Long-term Career Track

For D-10 visa holders ready for intensive job-ready experience with immediate placement possibilities.

- Up to 12 weeks duration
- In-depth training
- Direct hiring pathway

# What Makes Us Different

Career Bridge goes beyond traditional internship programs by providing comprehensive support throughout your journey. We offer full-time work arrangements with primarily office-based experiences and limited remote options to ensure authentic workplace immersion.

Companies benefit from global market insights, enhanced language and communication skills, and cultural diversity. Participants receive formal recognition including internship certificates, recommendation letters for top performers, and genuine opportunities for career placement with participating organizations.





# Why Join Career Bridge?

## Five Compelling Reasons



# Experience Authentic Korean Corporate Culture

Step inside real Korean companies and discover firsthand how Korean organizations operate, collaborate, and innovate. This isn't a simulated experience—you'll be working within actual corporate environments, observing and participating in daily operations.

Learn the nuances of Korean business etiquette, communication styles, hierarchical structures, and decision-making processes. Understanding these cultural elements is crucial for anyone considering a long-term career in Korea's competitive business landscape.





## Develop Practical, Market-Ready Skills

This program isn't about coffee runs and photocopying. You'll participate in meaningful projects across diverse fields including marketing, sales, translation, IT, and engineering. These are real responsibilities that contribute to actual business outcomes.

Apply your academic knowledge to practical challenges, develop problem-solving abilities, and build a portfolio of work that demonstrates your capabilities to future employers. The skills you gain here are directly transferable to your future career.



# Strengthen Your Professional Profile

## Official Certification

Receive an internship completion certificate that validates your experience and demonstrates your commitment to professional development.

## Recommendation Letters

Top-performing interns receive recommendation letters from Korean companies—powerful endorsements that carry significant weight with future employers.

## Enhanced Resume

Add concrete Korean work experience to your resume and LinkedIn profile, setting yourself apart from other candidates in the competitive job market.

# Build a Global Professional Network



Work alongside experienced Korean mentors who provide guidance, feedback, and insights into Korean business practices. Connect with fellow participants from diverse cultural backgrounds, creating a global network that extends far beyond the program duration.

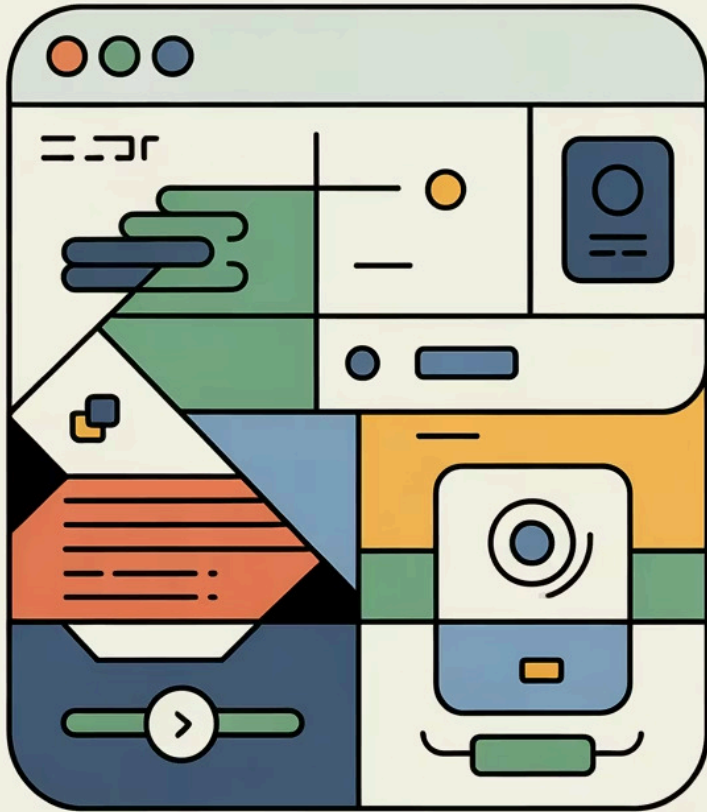
These relationships often lead to future collaborations, job referrals, and lifelong friendships. Your network becomes one of your most valuable career assets.



# Unlock Career Placement Opportunities

Outstanding performance during your internship can lead directly to full-time employment offers. Companies use this program to identify and evaluate potential long-term hires, giving you a significant advantage over external candidates.

The Long-term Career Track (D-10 visa) is specifically designed to enable up to three months of full-time participation, allowing companies to thoroughly assess your fit for permanent positions. Many of our participants have successfully transitioned from interns to full-time employees.



## How the Program Works

# Your Journey: Step by Step



## **Apply**

Submit your resume and statement of purpose expressing your career interests and goals.



## **Prepare**

Complete pre-training and orientation to understand Korean corporate culture and job expectations.



## **Get Matched**

We connect you with companies based on your background, skills, and career aspirations.



## **Work Experience**

Begin your hands-on work experience with ongoing support and feedback throughout.



## **Succeed**

Receive certification and explore career placement opportunities with your host company.



# Eligibility Requirements

The Career Bridge Program welcomes all international students seeking to build meaningful careers in Korea. While eligibility varies by visa type and residency status, we maintain core requirements for all participants.

1

## Language Proficiency

Ability to communicate effectively in English or Korean for workplace interactions and project participation.

2

## Application Materials

Capability to submit a professional resume and compelling statement of purpose outlining your career objectives.

3

## Professional Commitment

Demonstrated commitment, responsibility, and determination to complete the full program duration successfully.

# Program Tracks Comparison

Choose the track that aligns with your current visa status, availability, and career goals. Each track offers unique benefits tailored to different participant needs.

Track	Eligible Students	Duration	Career Placement	Work Style	Key Features
Short-term Cultural Experience	Exchange students, language trainees, short-term visitors	Up to 8 weeks	Not available	Full-time, on-site	Cultural & organizational exposure, online orientation
Short-term Career Track	Degree-seeking international students (D-2 visa)	Up to 8 weeks	Available after graduation	Full-time, on-site	Career pipeline development, cultural learning
Long-term Career Track	Job-seeking visa (D-10) holders	Up to 12 weeks	Immediate placement possible	Full-time, on-site	Job-ready projects, in-depth training, placement support

# Training & Preparation

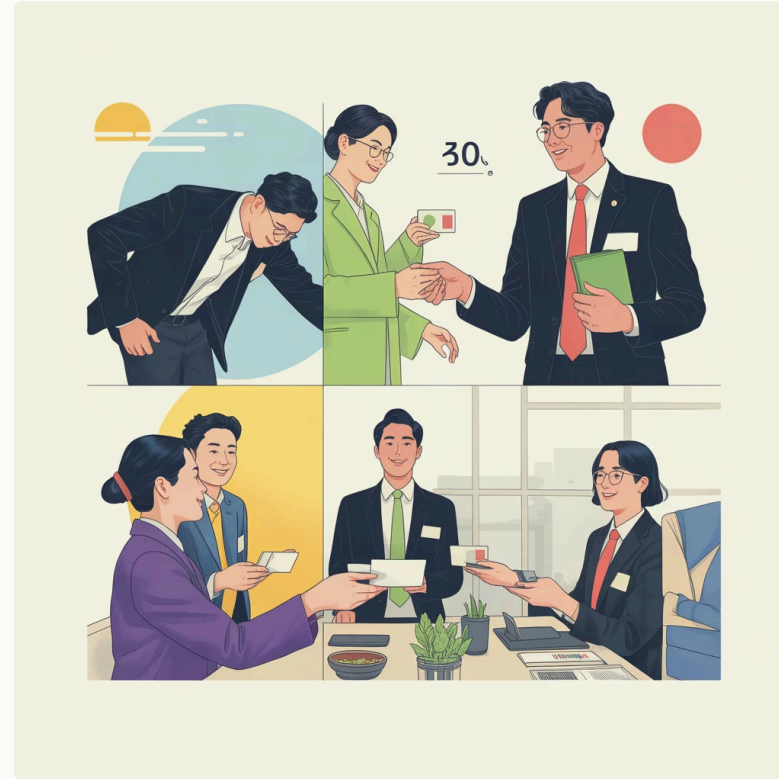
## Pre-Program Training (optional – provided by host company)

All tracks include company-specific pre-training and assignments to ensure you're prepared from day one. This foundational preparation sets you up for success.



## Cultural Orientation

Comprehensive orientation covering Korean corporate culture, workplace norms, and professional expectations. Cultural learning modules are available for all participants.





## Available Internship Roles

Career Bridge offers diverse roles across multiple business functions, allowing you to leverage your unique background and interests while developing new professional capabilities.

# Marketing & Sales



## Drive Business Growth

Contribute to market expansion and customer engagement through strategic marketing initiatives and sales support.

- Conduct market research and competitive analysis
- Develop digital marketing campaigns and content
- Localize marketing materials for global audiences
- Manage global customer communications and relationships



# IT & Engineering

## Build Technical Solutions

Apply your technical skills to real-world projects, contributing to software development and data-driven decision making.

- Participate in software development cycles
- Perform data analysis and visualization
- Create and maintain technical documentation
- Support product localization and testing





# Translation & Interpretation

Bridge language barriers and facilitate cross-cultural communication for Korean companies expanding globally.

## Document Translation

Translate business documents, technical materials, and corporate communications with cultural sensitivity and accuracy.

## Website Localization

Adapt website content and user interfaces for international markets, ensuring cultural relevance and engagement.

## Marketing Content

Localize marketing materials, social media content, and promotional campaigns for target audiences.

## Live Interpretation

Provide interpretation services during meetings, conferences, and events, facilitating real-time communication.

# Global Business Support



Support Korean companies' international operations through client communications, documentation, and project coordination across multiple countries and time zones.

- Manage communications with international clients and partners
- Prepare and organize business documentation
- Coordinate multi-national project activities
- Support cross-cultural business initiatives



## Role Assignment Process

Your role assignment is carefully determined based on your capabilities, educational background, work experience, and career interests, matched against company job descriptions and specific needs. The final placement is confirmed after thorough consultation between you, our team, and the host company to ensure optimal fit and mutual satisfaction.

# Program Investment

The participation fee covers comprehensive services that ensure your success throughout the program, from initial matching to final certification.

## 4 Weeks

**KRW 1,400,000**

Includes meals & transportation support from company

## 8 Weeks

**KRW 1,800,000**

Includes meals & transportation support from company

## 12 Weeks

**KRW 2,200,000**

Includes meals & transportation support from company



# What Your Fee Includes



## Company Matching

Personalized matching service connecting you with companies based on your background, skills, and career aspirations.



## Training & Orientation

Comprehensive pre-training covering Korean corporate culture, workplace expectations, and job readiness preparation.



## Ongoing Support

Continuous internship operations support including mid-term check-ins, feedback sessions, and issue mediation throughout your program.



## Official Certification

Internship completion certificates and recommendation letters for top performers to enhance your professional credentials.



## Career Opportunities

Access to potential career placement opportunities with participating companies based on performance and mutual interest.



## Hear from Our Participants

# Student Success Stories

“

"Through this internship, I experienced Korean corporate culture and learned how real workplaces operate. The experience was invaluable for understanding business dynamics."

— *International Student Participant*

”

“

"By participating in real projects, I applied my major knowledge to practice, and even received additional proposals after completing my work successfully. It exceeded my expectations."

— *Career Track Intern*

”

“

"Working in a Korean company was a big challenge, but thanks to the supportive colleagues, I gained confidence and valuable career experience that transformed my professional outlook."

— *Long-term Track Participant*

”

# What Companies Are Saying

"The interns' attitude and skills were impressive, demonstrating both professionalism and responsibility. We were highly satisfied with the talent pool provided."

## **Head of Data Platform**

D Company, Developer of in-cabin monitoring solutions

"The interns' abilities exceeded expectations and contributed meaningfully to our projects."

## **Marketing Manager**

H Company, Developer of blockchain healthcare solutions

---

"We were highly impressed with the interns' skills and capabilities, and overall extremely satisfied. Thank you very much. :)"

## **People & Ops Lead**

N Company, Developer of virtual fitting and on-model imagery solutions



## Frequently Asked Questions



# Your Questions Answered

1

## **Is the program paid?**

The program itself is unpaid. However, companies provide meal allowances, transportation support.

2

## **What are the participation hours?**

Typically full-time work at 36–48 hours per week. Most work is on-site at the company office, with up to one day of remote work per week when appropriate.

3

## **Can I choose my role?**

Yes, you may indicate your preferred roles during application. The final assignment depends on company job descriptions, your qualifications, and overall suitability for available positions.

4

## **Can the program lead to a job?**

Absolutely. Both Short-term Career Track and Long-term Career Track can lead to potential employment depending on your performance and company hiring needs and agreement.

5

## **Are there additional costs?**

Yes, international travel (airfare) and accommodation expenses are not included in the program fee. Participants are responsible for arranging and covering these costs independently.



# Ready to Start Your Journey?

## Contact Us

**Celine (Hyohyun) Kim**

Co-founder & COO

**Email:**

[celine@sarang.community](mailto:celine@sarang.community)

**Phone:**

+82-10-4570-9002

## Apply Now

Visit the application link to begin your Career Bridge journey.[h](#)

**Apply Now**